

Ticket Information

Prices for evening concerts:

£12 (£10 concession), Students (15-18 yrs) £2.50 and accompanied children 14 yrs and under, free.

Prices for lunchtime concerts at the Wyvern:

All tickets £5.00

Booking information

Swindon Arts Centre Concerts

The Arts Centre,
Devizes Road,
Swindon, SN1 4BJ

Booking Office 01793 614837.

Christ Church and Immanuel United Reform Church

Tickets to be purchased on the door.

Wyvern Theatre

Booking Office 01793 524481 or book online on www.wyverntheatre.org.uk



Lunchtime Concerts at the Wyvern Theatre

With *MORE* informal music and *MORE* food, the lunchtime recitals continue to offer you *MORE* SWINDON RECITAL SERIES!

Wed 13 October 2010, 1.05pm, Wyvern Theatre

Marlborough College Music Scholars

An inspirational start to the new season from talented young players.

Wed 1 December 2010, 1.05pm, Wyvern Theatre

Paul Turner *piano*

The second recital exploring even more of Chopin's most popular melodies in this bicentenary celebration.

Wed 26 January 2011, 1.05pm, Wyvern Theatre

Bethan Dudley *soprano* Paul Turner *piano*

A beautiful and exciting programme of English and traditional Welsh song.

Wed 23 February 2011, 1.05pm, Wyvern Theatre

Collegium Brass

Rich and mellow sounds in a programme of classical and light music.

Wed 6 April 2011, 1.05pm, Wyvern Theatre

Lorna Osbon *violin* Paul Turner *piano*

Direct from the Pump Room Trio in Bath, Lorna will explore the delights of the French repertoire.

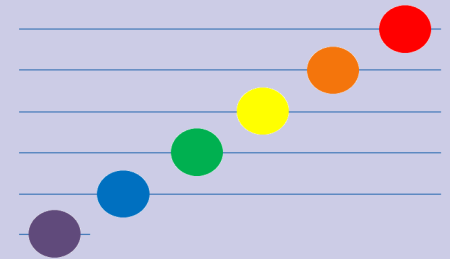
The Swindon Recital Series is supported by Swindon Borough Council through a grant from the McDermott Memorial Concert Fund



Swindon Recital Series

2010 - 2011 Season

"Life affirming *live* classical music"



www.swindonrecitalseries.org

Patron: Dame Evelyn Glennie

Do You Deserve *More?*

MORE indulgence, *MORE* entertainment, *MORE* live music? We can offer you *MORE!* The Swindon Recital Series is proud to unveil its own *Music Of Renown Ensemble*, formed from our most admired professional singers and instrumentalists and joined by specially chosen guest artists to consistently offer you *MORE* accessible, popular and high quality classical music!

The Series

Sunday 26th September, 3.00pm (Pre Concert Talk 2.15pm), Swindon Arts Centre

MORE SOLDIER'S TALE

This inaugural recital from the Music Of Renown Ensemble will feature one of the great masterpieces of the 20th Century in Stravinsky's jazz-based story of a soldier who sells his soul (represented by his violin) to the devil, in return for a book promising untold wealth. The beautiful A major violin sonata by Brahms, Debussy's evocative *Première Rhapsody* and the dramatic Poulenc clarinet sonata complete this exciting programme.

Miranda Dale violin, David Campbell clarinet Paul Turner piano



David Campbell

Saturday 30th October, 7.30pm (Pre-concert talk 6.45pm), Immanuel United Reform Church

MORE POULENC GLORIA

Poulenc's Gloria is a gorgeous soul-affirming work, boasting such great music that it empowers us to transcend our troubles. This will be partnered by other works from French composers, including motets by Poulenc's contemporary, Pierre Villette. Ethereal music by the former Classic fm composer in residence, Patrick Hawes, and arrangements from the lighter repertoire will round off this inspiring programme.

Avebury Vocal Ensemble, Sir Peter Beale conductor

Sunday 21st November, 3.00pm, Swindon Arts Centre

MORE CHOPIN

Few composers are as immediately recognisable and able to conjure such an elegance of style as Chopin. In the first of two concerts celebrating the bicentenary



Paul Turner

See reverse for Lunchtime Concerts at the Wyvern Theatre

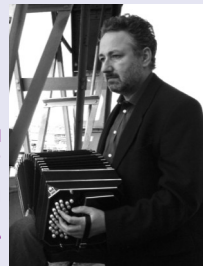
of Chopin's birth and highlighting some of his most loved and enduring melodies, his florid and vocal writing is shown to best advantage in major works such as the G minor Ballade and the F minor Fantasie, featuring alongside the Fantaise-Impromptu, waltzes, nocturnes and etudes to offer a glittering and tuneful recital.

Paul Turner piano

Saturday 12th February, 7.30pm, Swindon Arts Centre

MORE TANGO

The tango immediately evokes the brooding and dangerous sounds of South America and has become synonymous with the works of Astor Piazzolla. "Julian Rowlands is one of the UK's few genuinely accomplished players of the bandoneon - the snaking accordion whose rich and plangent tone is at the heart of the passionate darkness of Argentinian dance music" (Venue Magazine). The programme will span the major works of Piazzolla, through tango arrangements, to classical pieces and the artists' own compositions, but will showcase the unmistakably authentic world of the Tango.



Julian Rowlands

Julian Rowlands bandoneon, Ivo de Greef piano

Sunday 20th March, 3.00pm (Pre-concert talk 2.15pm), Swindon Arts Centre

MORE TROUT QUINTET

The *Music Of Renown Ensemble* presents one of the most familiar and popular works in classical music with Schubert's 'Trout' Quintet. Appropriately for this occasion, it was written for a group of friends, and at the heart of the work, includes variations on Schubert's own song, *The Trout*. "In it is enshrined the memory of a delightful summer, of carefree leisure days; the music is bathed in sunshine and the spirit of youth" (Massimo Mila). The concert will also include Mozart's Piano Quartet in Eb major and Beethoven's 7 Variations from Mozart's 'Magic Flute' for cello and piano.



Miranda Dale

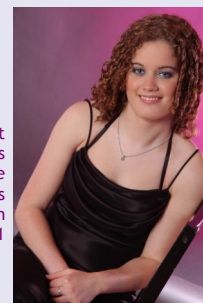
Miranda Dale violin, Carmen Flores viola, Caroline Dale cello, David Daly double bass, Paul Turner piano

Saturday 9th April, 7.30pm, Christ Church

MORE ORGAN FAVOURITES

The 'King of instruments' presides over our most important personal and national occasions. This programme explores the most familiar and impressive sounds from this great instrument, including Bach's *Tocatta and Fugue* in D minor, Widor's *Tocatta* from Symphony No.5, the *Finale* from Vierne's Symphony No.1 and the great Boellmann *Suite Gothique*.

Hannah Brooke organ



Hannah Brooke

See reverse for Lunchtime Concerts at the Wyvern Theatre

Becoming a Friend

The Swindon Recital Series is committed to the promotion of world-class chamber music in the Swindon area through professional recitals and master classes, but can only remain at the forefront of music-making with your support. If you are inspired by listening to live, professional concerts or would like to support our educational programme, please seriously consider becoming a Friend of the Swindon Recital Series. Your donations will go directly to a dedicated Friends' concert and in return you will receive free admission to educational events, and the opportunity to have a say in the forward planning of the organisation. To become a Friend, please speak to one of our Front of House staff, or simply complete and return this form.

I wish to become a "Friend"
(minimum annual donation £20 per person)

Total donation £

Please tick the Gift Aid box below and fill in your name and address if you would like us to claim an extra 28% from the UK government at no extra cost to you. To be eligible you must pay income or capital gains tax equal to the amount that we claim.

Gift Aid

Name _____
Address _____

Postcode _____
Email _____

Please send to:

Swindon Recital Series
c/o 51d Broome Manor Lane
Swindon
Wiltshire SN3 1NB



See reverse for Lunchtime Concerts at the Wyvern Theatre